

LOCK SWITCH

RAL LOCK SWITCH WITH A MAINSWITCH MODULE

ELECTRICAL & MECHANICAL SPECIFICATION

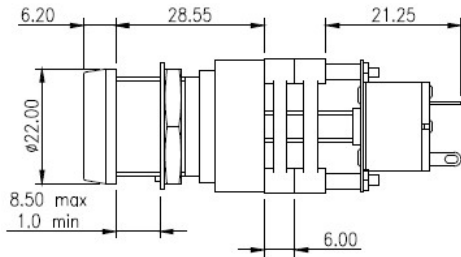
Mains Switch Rating:	4/80A @ 250V ac/dc	Wafer Switch Rating:	500mA @24V ac/dc
Proof Voltage:	1,000V ac (Initial)	Life:	>10,000 Cycles
Insulation Resistance:	>999 MΩ at 500V dc (Initial)	Operating Temperature:	-30°C to +85°C
Contact Resistance	<20 mΩ (Initial)	Operating Torque (nominal):	7.2Nm
Contact/Terminal Material:	Brass CZ108 Ag Plated	End Stop Torque (nominal):	1.2Nm
Wafer Material:	Polyphenylene Sulphide (PPS)	Lock Housing Material:	Zinc Alloy Bright Cr Plated
		Keys Material:	Mild Steel Ni Plated

FEATURES

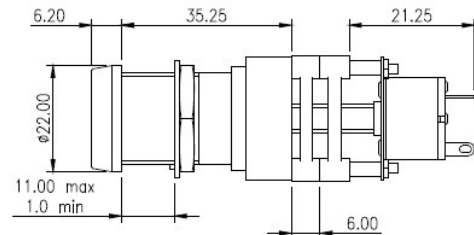
Multi-wafer switch	2 keys per switch as standard	Non-shorting BBM (break before make) or Shorting MBB (make before break)	Two stage assembly: lock inserted from the inside and the lock bezel screws on from the front to secure the assembly
Up to 6 poles per switch	Lock movement 60° or 90°		
Solder terminals	30°, 45°, 60° or 90° module indexing		
Silver contacts			
Made in the UK	Common or differ keys		
	Master key system available		

		5RAL	8RAL
Max panel thickness		8.5 mm	11.0mm
Lock type:		5 disc	8 disc
Differs		200	2000
Max. wafers			6 or 2 plus 2 pole mains switch

MULTI- WAFER RAL LOCKSWITCHES WITH MAINS MODULE

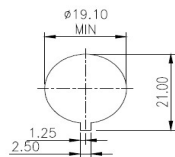


5-RAL-001 (Keys free at 90° intervals)
5-RAL-002 (Keys free at 60° intervals)

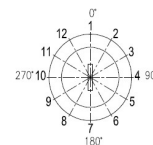


8-RAL-001 (Keys free at 90° intervals)
8-RAL-002 (Keys free at 60° intervals)

PANEL PIERCING



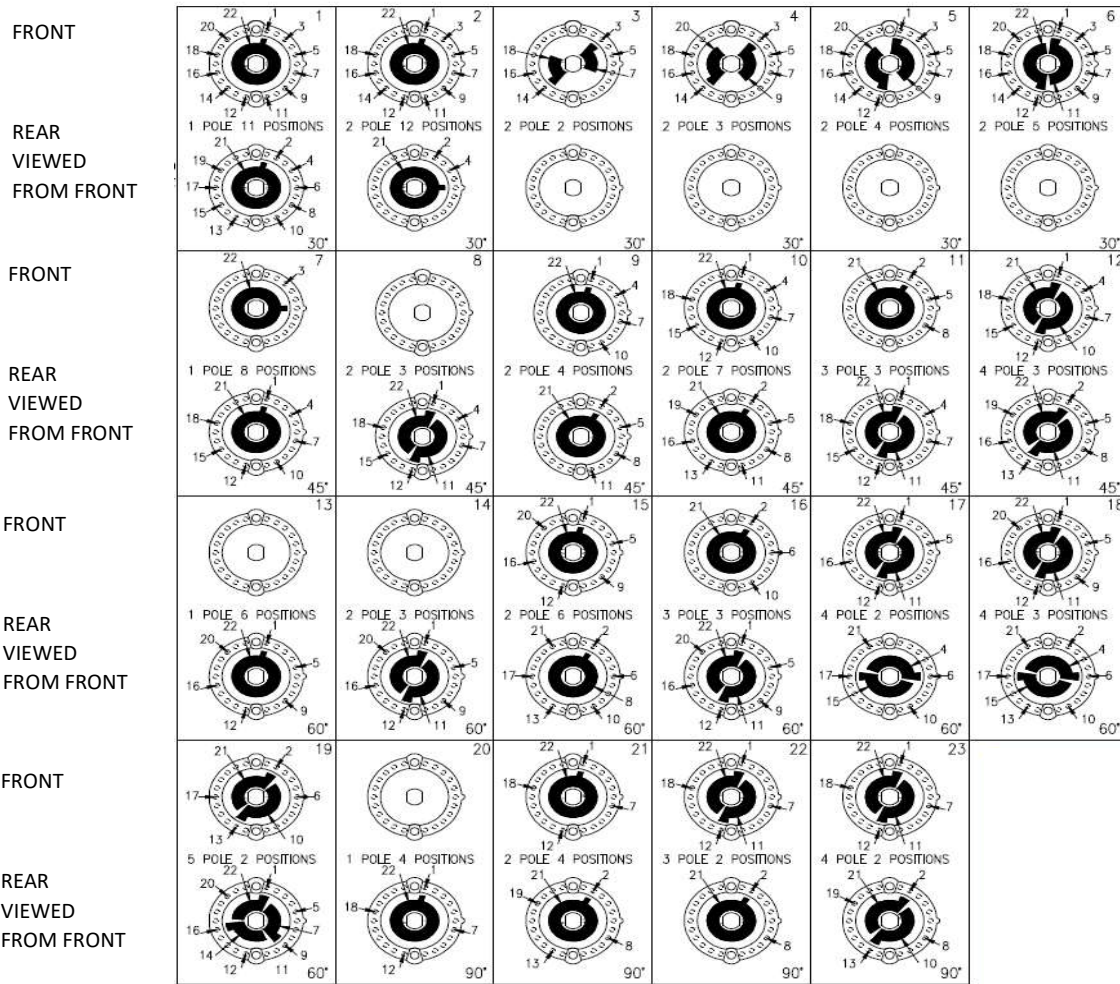
LOCK MOVEMENT DESC.



STANDARD CIRCUITRY AND KEY WITHDRAWAL POSITIONS

INDEX ANGLE	STANDARD CIRCUITS NON SHORTING CONTACTS SOLDER TERMINALS						TOTAL SWITCH MOVEMENT	KEY FREE POSITIONS				
	1 ROLE	2 ROLE	3 ROLE	4 ROLE	5 ROLE	6 ROLE		KRA	5RAL (200 KEY DIFFERS)		8RAL (200 KEY DIFFERS)	
								(200 KEY DIFFERS) (KEY FREE 60° STEPS)	-01 (KEY FREE 90° STEPS)	-02 (KEY FREE 60° STEPS)	-01 (KEY FREE 90° STEPS)	-02 (KEY FREE 60° STEPS)
30°	2 WAY	2 WAY	2 WAY	2 WAY	2 WAY	2 WAY	0°-30°	1	1		1	
	3 WAY	3 WAY	3 WAY	3 WAY	3 WAY		0°-60°	1+3	1	1+3	1	1+3
	4 WAY	4 WAY	4 WAY	4 WAY			0°-90°		1/1+4		1/1+4	
	5 WAY	5 WAY	5 WAY				0°-120°	1+3+5	1/1+4	1+3+5	1/1+4	1+3+5
	6 WAY	6 WAY					0°-150°		1/1+4		1/1+4	
	7 WAY	7 WAY					0°-180°	1+3+5+7	1+7/1+4+7	1+3+5+7	1+7/1+4+7	1+3+5+7
	8 WAY						0°-210°					
	9 WAY						0°-240°	1+3+5+7+9		1+3+5+7+9		1+3+5+7+9
	10 WAY						0°-270°		1+4+7+10		1+4+7+10	
	11 WAY						0°-300°					
	12 WAY						0°-330°					
							0°-360° No Stop	1+3+5+7+9+11	1+7/1+4+7+10	1+3+5+7+9+11	1+7/1+4+7+10	1+3+5+7+9+11
45°	2 WAY	2 WAY	2 WAY	2 WAY			0°-45°		1		1	
	3 WAY	3 WAY	3 WAY	3 WAY			0°-90°		1/1+4		1/1+4	
	4 WAY	4 WAY					0°-135°					
	5 WAY	5 WAY					0°-180°	1+7	1+7/1+4+7		1+7/1+4+7	
	6 WAY	6 WAY					0°-225°					
	7 WAY	7 WAY					0°-270°		1+4+7+10		1+4+7+10	
	8 WAY						0°-315°					
							0°-360° No Stop	1+7	1+4+7+10		1+4+7+10	
60°	2 WAY	2 WAY	2 WAY	2 WAY	2 WAY		0°-60°	1/1+3	1	1+3	1	1+3
	3 WAY	3 WAY	3 WAY	3 WAY			0°-120°	1+3+5	1	1+3+5	1	1+3+5
	4 WAY	4 WAY					0°-180°	1+3+5+7	1+7/1+4+7	1+3+5+7	1+7/1+4+7	1+3+5+7
	5 WAY	5 WAY					0°-240°	1+3+5+7+9		1+3+5+7+9		1+3+5+7+9
	6 WAY	6 WAY					0°-300°					
	6 WAY	6 WAY		2 WAY			0°-360° No Stop	1+3+5+7+9+11	1+7/1+4+7+10	1+3+5+7+9+11	1+7/1+4+7+10	1+3+5+7+9+11
90°	2 WAY	2 WAY	2 WAY				0°-90°		1/1+4		1/1+4	
	3 WAY	3 WAY					0°-180°	1+7	1+7/1+4+7		1+7/1+4+7	
	4 WAY	4 WAY					0°-270°		1+7/1+4+7+10		1+7/1+4+7+10	
	4 WAY	4 WAY					0°-360° No Stop	1+7	1+7/1+4+7+10		1+7/1+4+7+10	

TYPICAL WAFER LAYOUTS 30°, 45°, 60° AND 90°



WAFERS ABOVE ARE VIEWED FROM THE FRONT OF THE SWITCH IN THE FURTHEST COUNTER CLOCKWISE POSITION.

CIRCUITY IS SHOWN AS BREAK BEFORE MAKE (BBM) NON-SHORTING.
MAKE BEFORE BREAK (MBB) OPTIONS ARE ALSO AVAILABLE

ORDERING CODES

PLEASE CONTACT US WITH YOUR REQUIREMENTS

